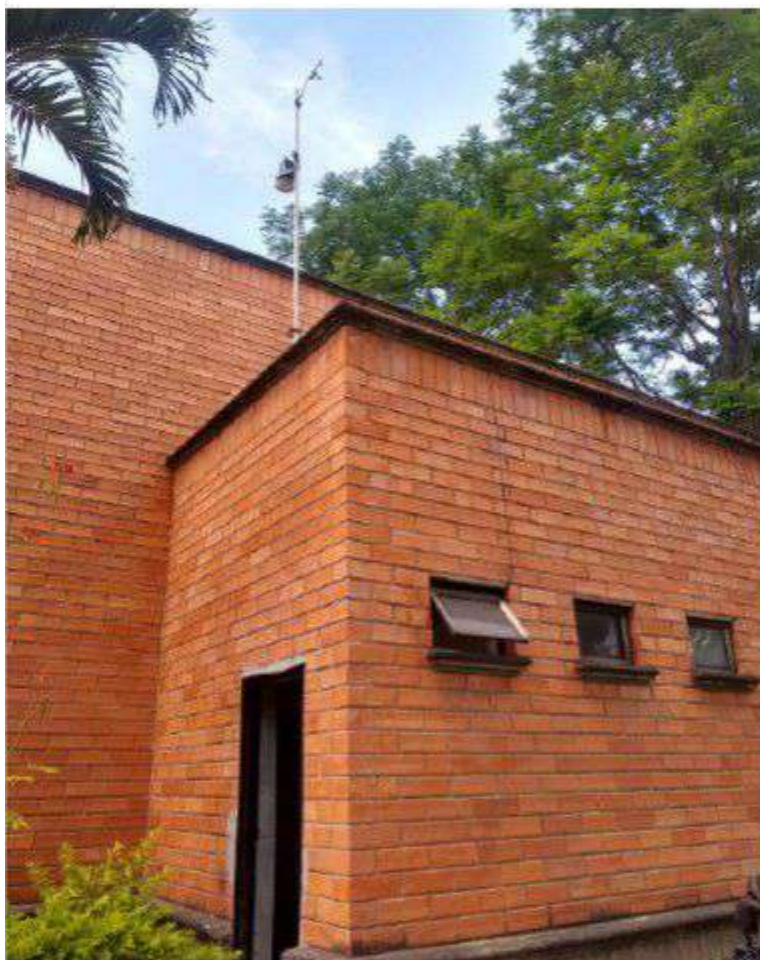
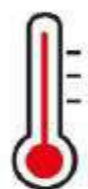


ESTACIÓN METEOROLÓGICA COLEGIO LA SALLE



Temperatura [°C]



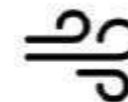
Max: 31.0
Prom: 21.7
Min: 15.6

Humedad [%]



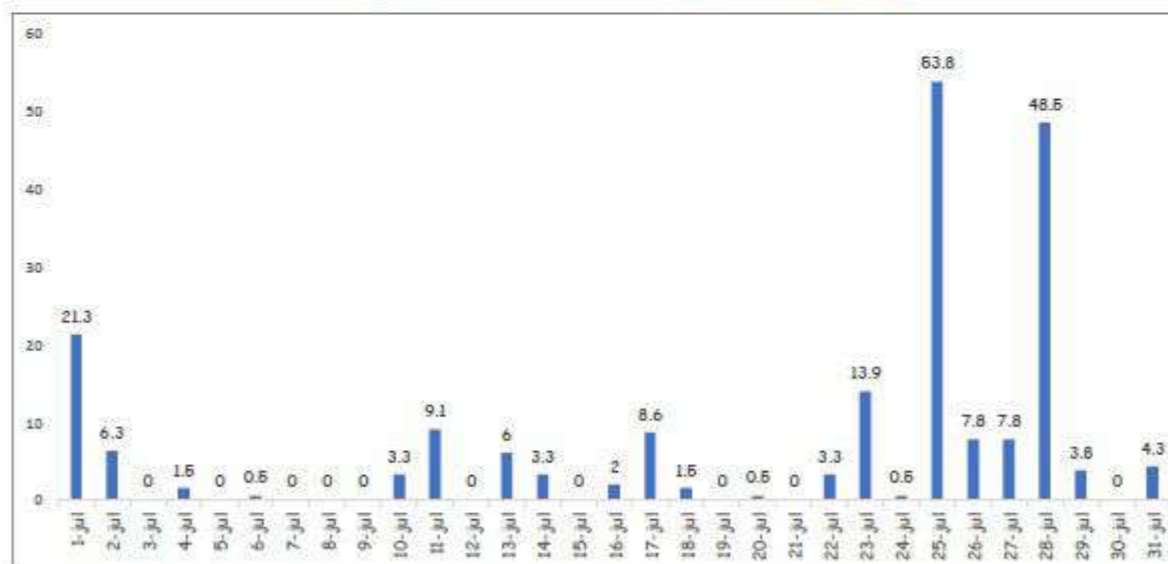
Max: 91.0
Prom: 72.1
Min: 35.0

Velocidad del viento [m/s]



Max: 5.3
Prom: 0.1
Min: 0.0

Precipitación acumulada por día [mm]

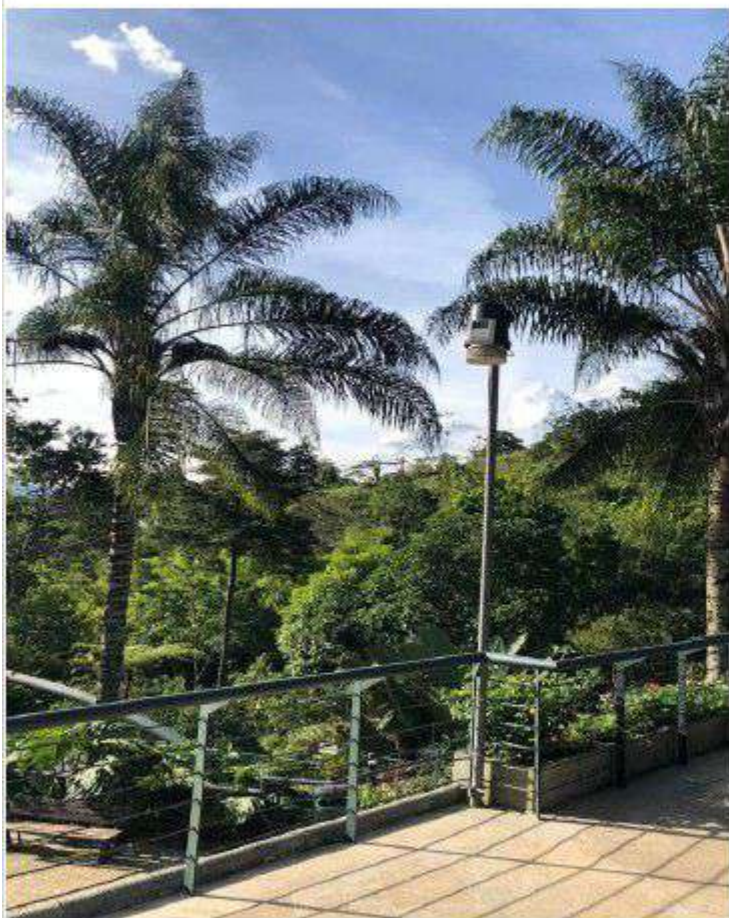


Precipitación acumulada [mm]



207.6

ESTACIÓN METEOROLÓGICA PARQUE ECOLÓGICO EL SALADO



Temperatura [°C]



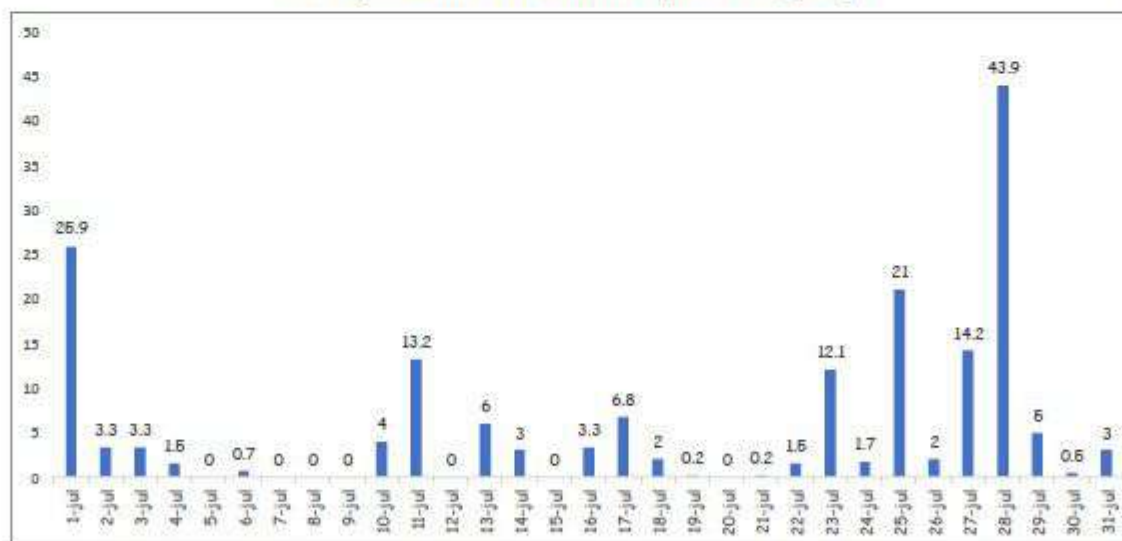
Max: 28.7
Prom: 18.5
Min: 13.5

Humedad [%]



Max: 96.0
Prom: 86.4
Min: 39.0

Precipitación acumulada por día [mm]



Precipitación acumulada [mm]



178.3

ESTACIÓN METEOROLÓGICA ESCUELA CRUZ DEL PORVENIR



Temperatura [°C]



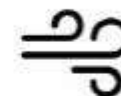
Max: 19.6
Prom: 13.4
Min: 8.6

Humedad [%]



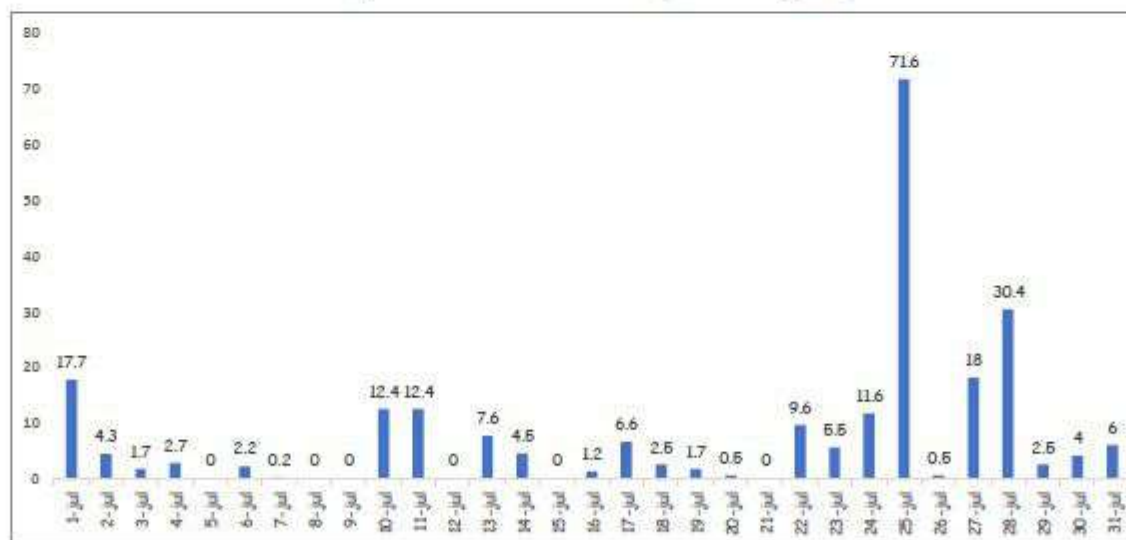
Max: 95.0
Prom: 85.3
Min: 63.0

Velocidad del viento [m/s]



Max: 8.4
Prom: 0.9
Min: 0.0

Precipitación acumulada por día [mm]



Precipitación acumulada [mm]



237.9