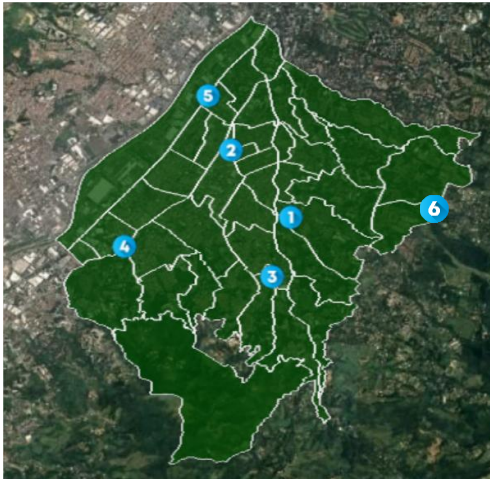


Presión Sonora

Promedio diurno y nocturno de presión sonora [dBA]



- 3 Universidad De Envigado
- 4 Clínica de la Policía
- 6 Loma del Chocho

Julio  
01 02 03 04 05 06 07 08 09 10 11 12 13 14 15 16 17 18 19 20 21 22 23 24 25 26 27 28 29 30 31

	01	02	03	04	05	06	07	08	09	10	11	12	13	14	15	16	17	18	19	20	21	22	23	24	25	26	27	28	29	30	31
<b>3</b> Universidad De Envigado																															
Prom. Diurno	51.8	51.4	51.0	51.5	51.0	50.2	51.5	52.0	51.2	51.7	51.1	52.7	50.4	51.6	51.7	52.0	51.9	51.8	51.4	50.6	51.9	52.1	52.7	52.6	52.5	51.3	50.3	52.0	52.2	52.3	52.4
Prom. Nocturno	47.8	47.9	47.7	47.2	47.7	47.7	48.0	48.0	47.6	47.3	46.9	48.3	48.1	48.1	47.9	48.1	47.8	48.2	48.0	47.8	47.6	48.3	47.9	48.5	47.8	46.5	47.6	47.8	48.0	48.5	48.3
<b>4</b> Clínica de la Policía																															
Prom. Diurno	54.3	54.4	54.6	54.6	54.3	53.5	54.4	54.4	54.7	54.4	54.4	54.6	53.1	54.6	54.2	56.3	54.7	54.5	54.3	56.2	54.3	54.4	54.4	54.2	54.4	54.4	53.6	54.5	54.2	54.7	54.5
Prom. Nocturno	50.7	50.3	51.1	51.1	52.1	50.9	50.0	50.3	50.2	50.6	51.8	51.5	50.3	51.1	50.2	50.9	50.3	51.4	51.2	50.6	51.2	50.6	51.0	51.0	51.1	50.4	50.9	51.2	50.9	51.1	50.8
<b>6</b> Loma del Chocho																															
Prom. Diurno	51.0	50.8	51.1	51.0	50.7	49.8	50.9	51.2	51.1	51.4	51.2	50.8	49.4	50.7	51.0	51.3	51.0	51.1	50.7	49.4	50.9	50.7	51.1	51.1	51.4	51.3	50.2	51.3	51.1	51.0	51.2
Prom. Nocturno	48.7	48.2	48.6	48.3	47.9	48.1	48.4	48.2	46.6	47.9	47.8	47.2	47.8	48.0	47.4	47.7	48.2	48.1	47.5	47.7	47.5	47.2	47.7	47.5	47.9	49.1	48.6	48.1	48.6	47.3	47.7

medioambiente.envigado.gov.co

